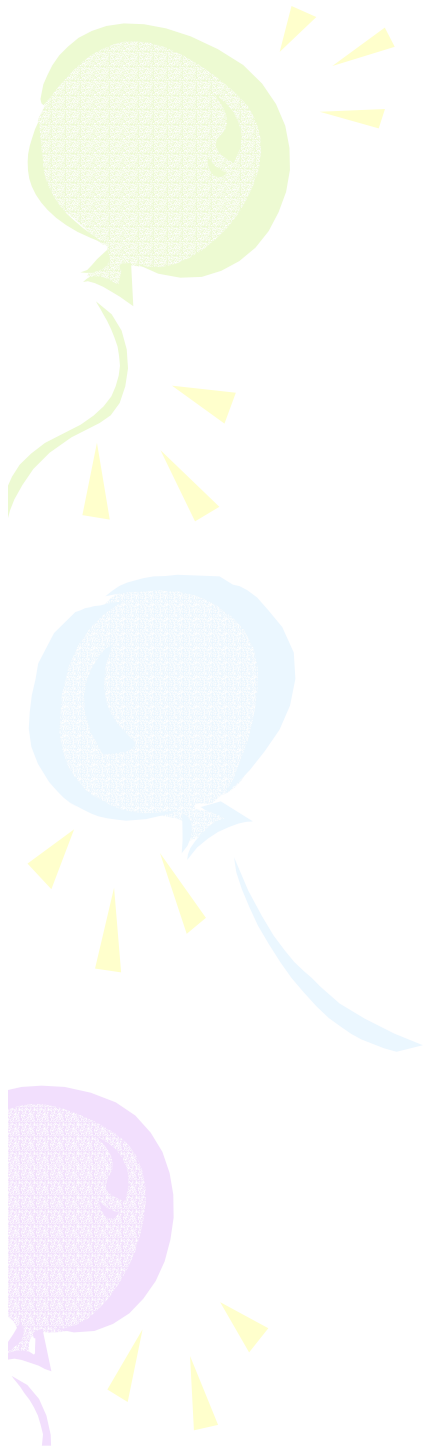
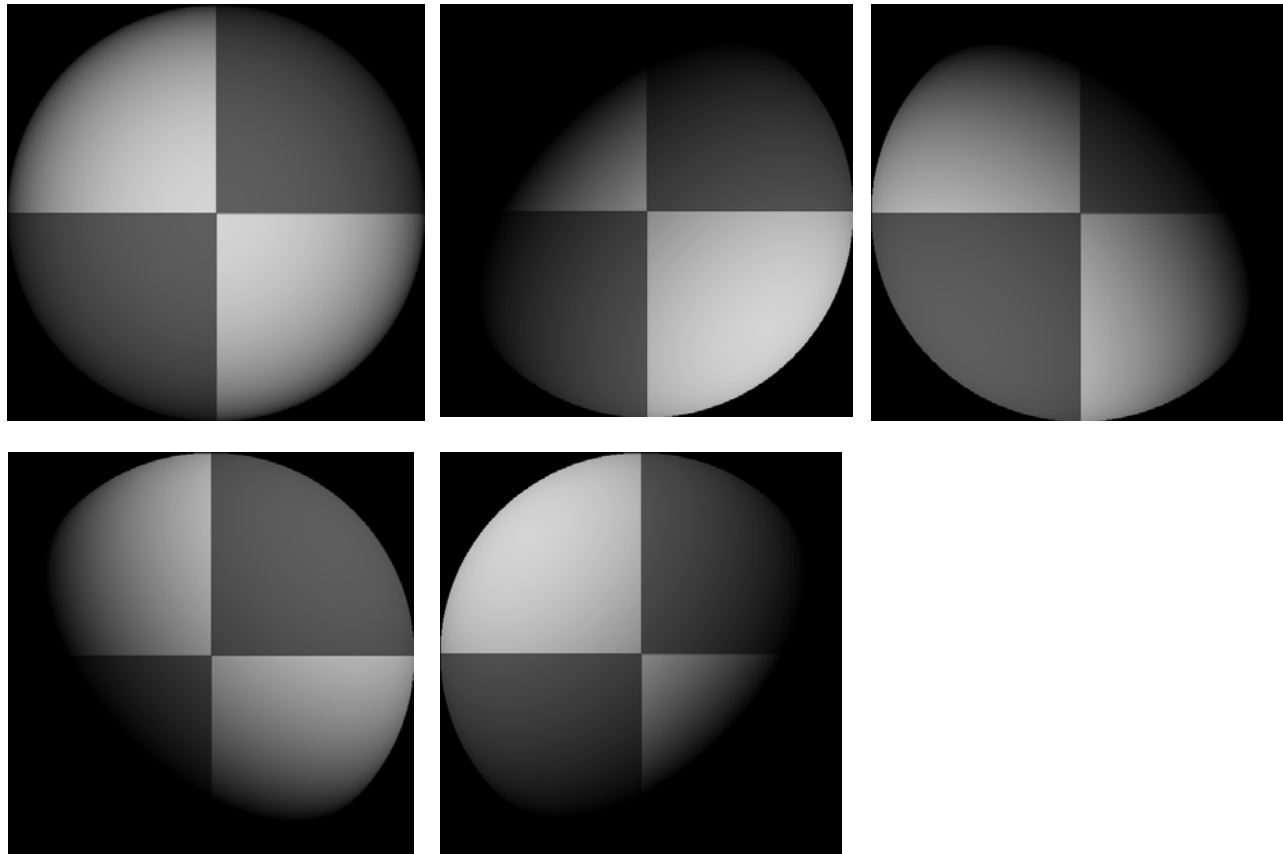


The background features several large, stylized, overlapping swirls in light green, light blue, and light purple. Interspersed among these swirls are numerous small, yellow, starburst-like shapes of varying sizes, creating a festive and dynamic visual effect.

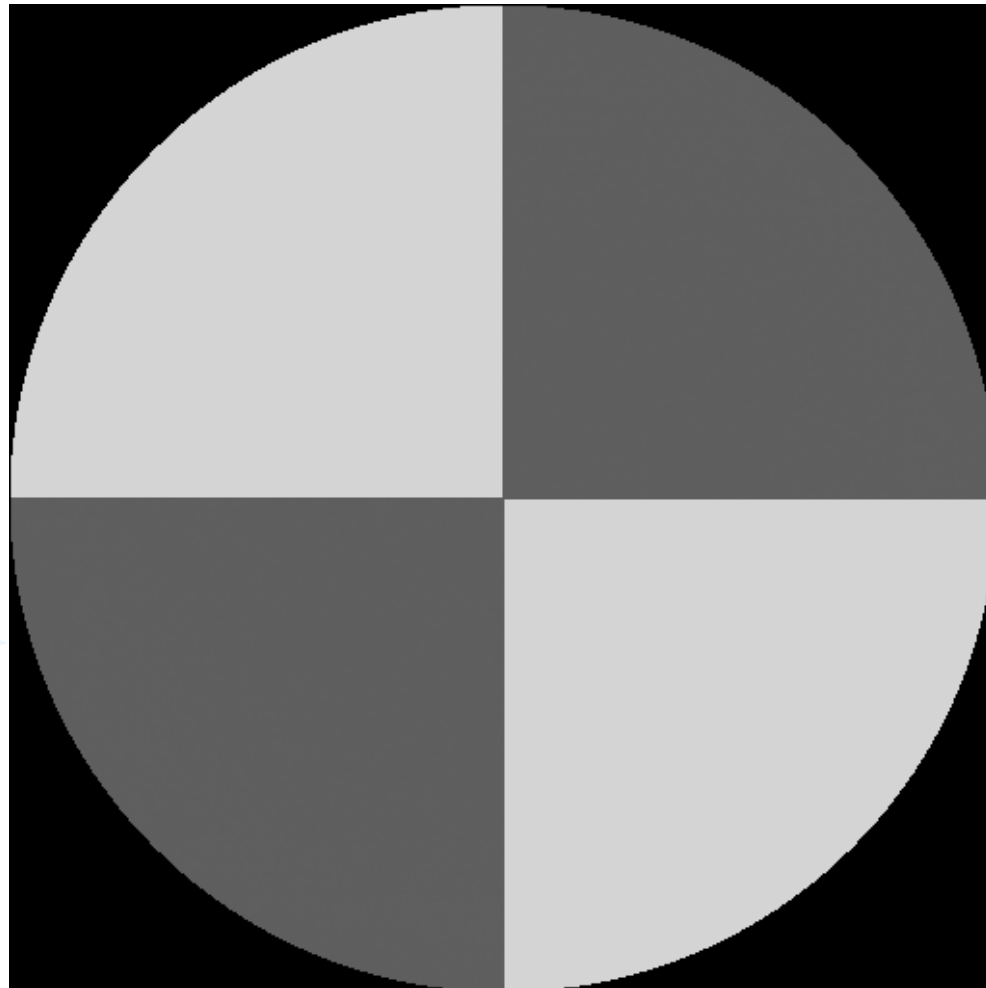
# **Photometric Stereo**

**CS 211A**

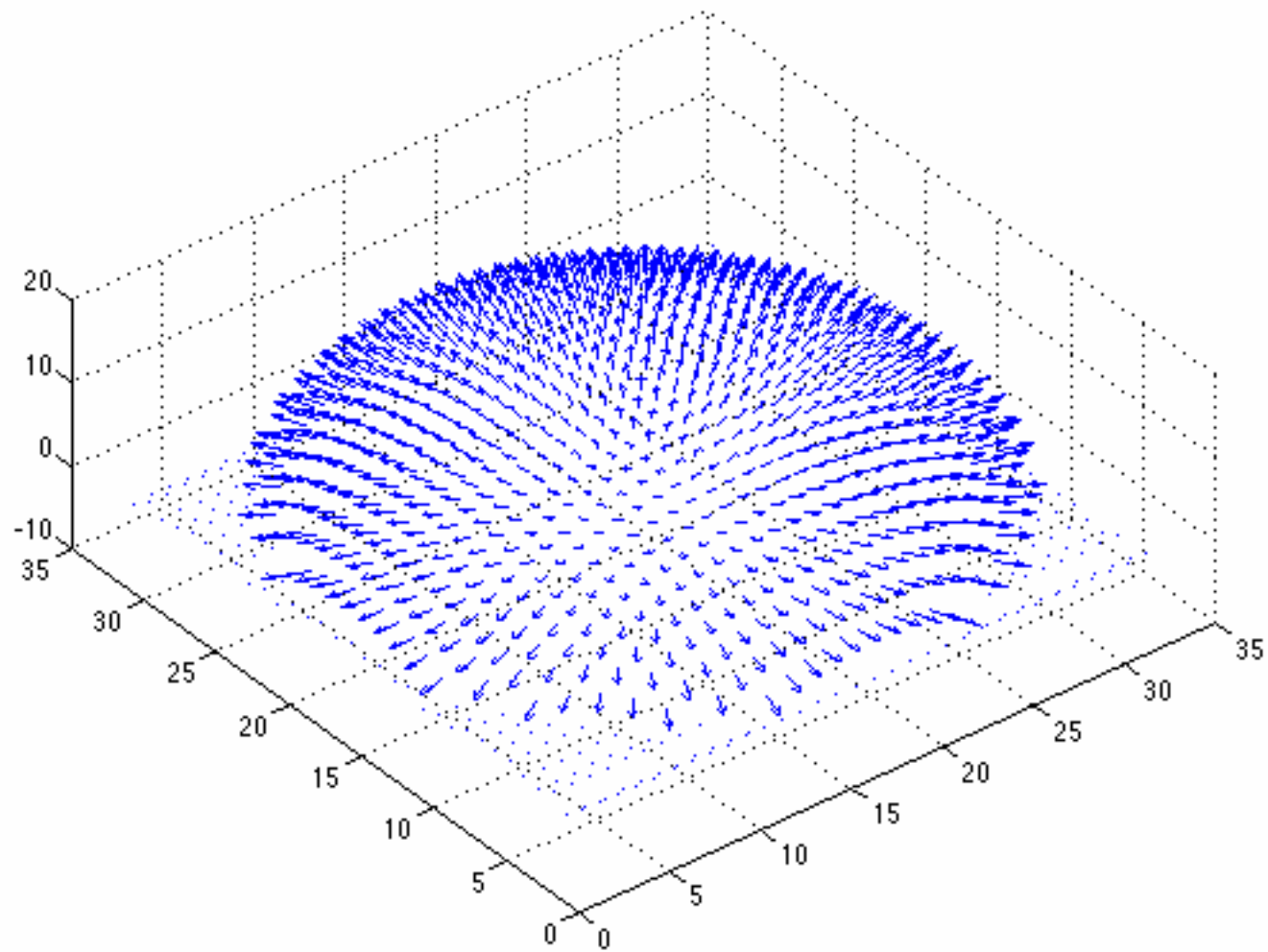
# Example figures



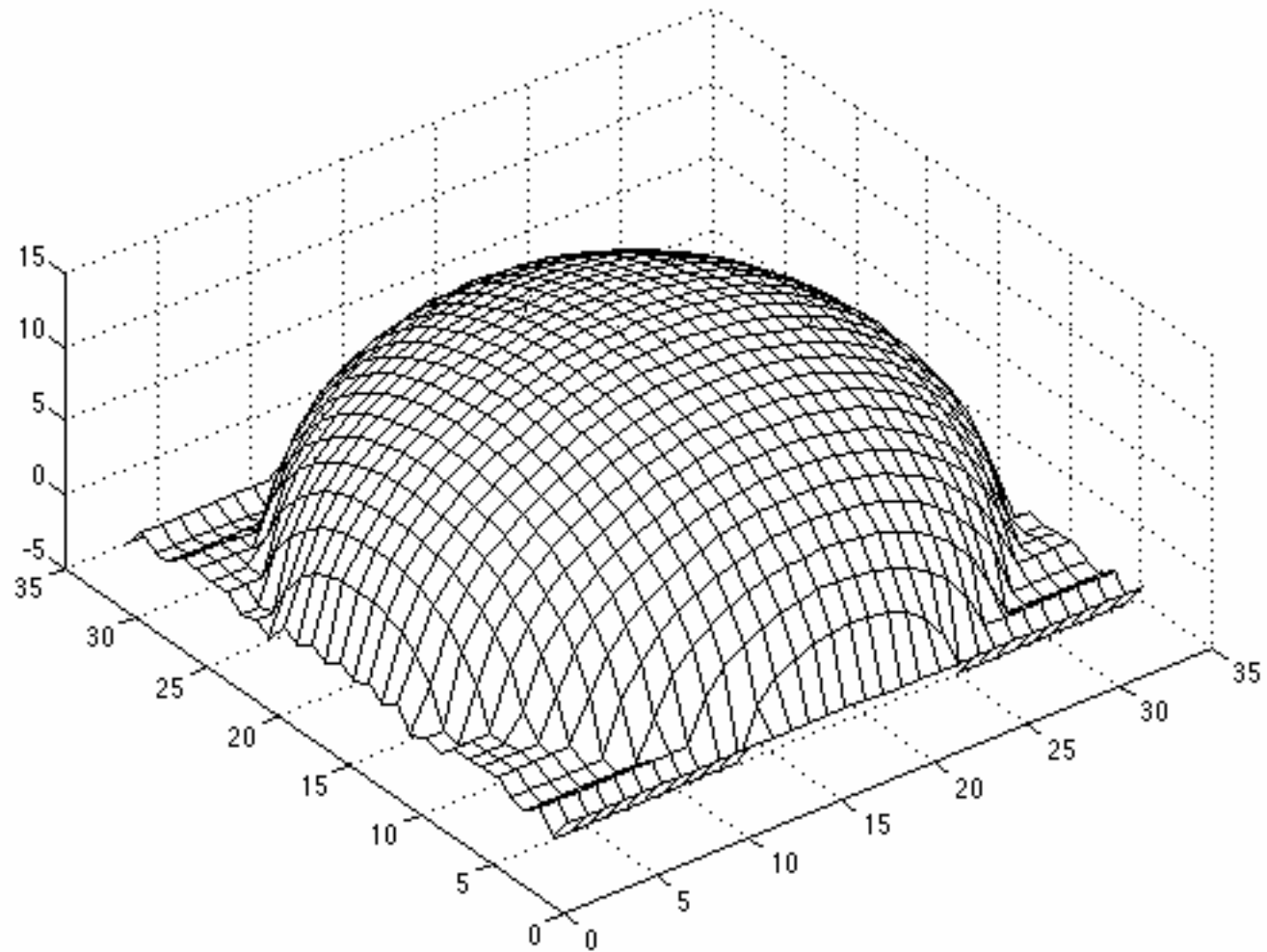
# Recovered reflectance



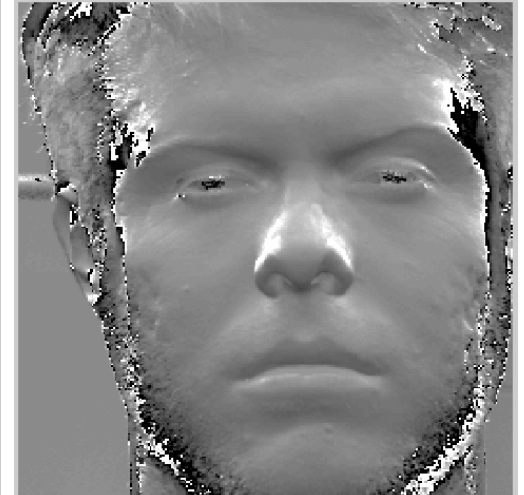
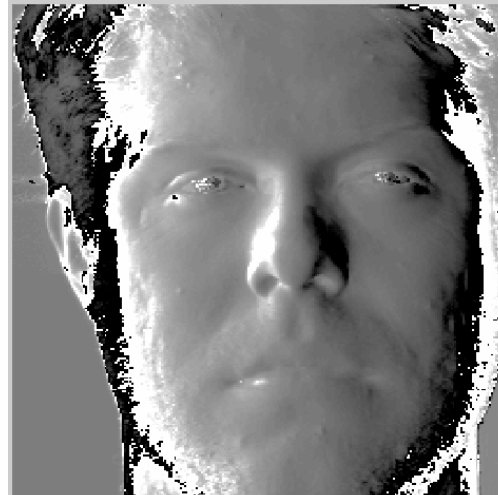
# Recovered normal field



## Surface recovered by integration



# Photometric stereo example



data from: <http://www1.cs.columbia.edu/~belhumeur/pub/images/yalefacesB/readme>