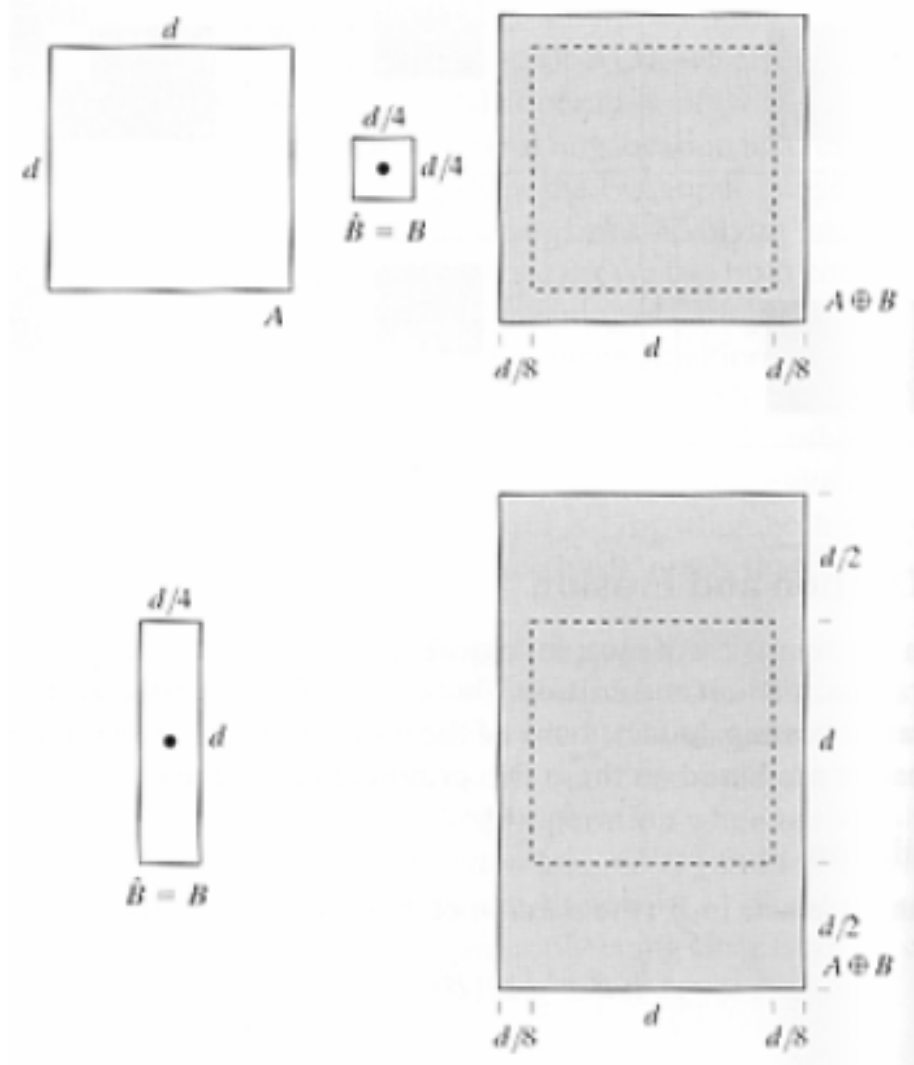
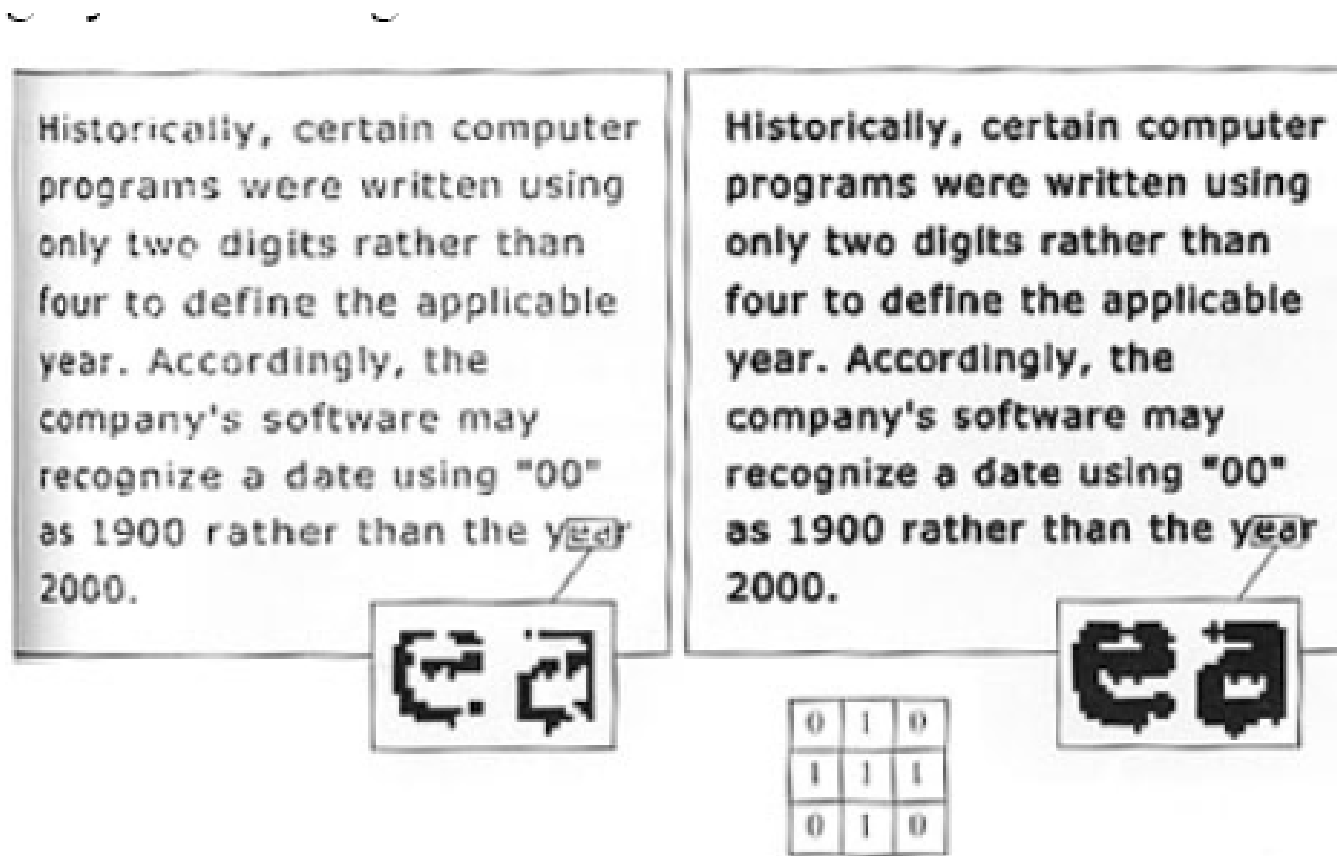

Morphological Operators

CS 111: Digital Image Processing

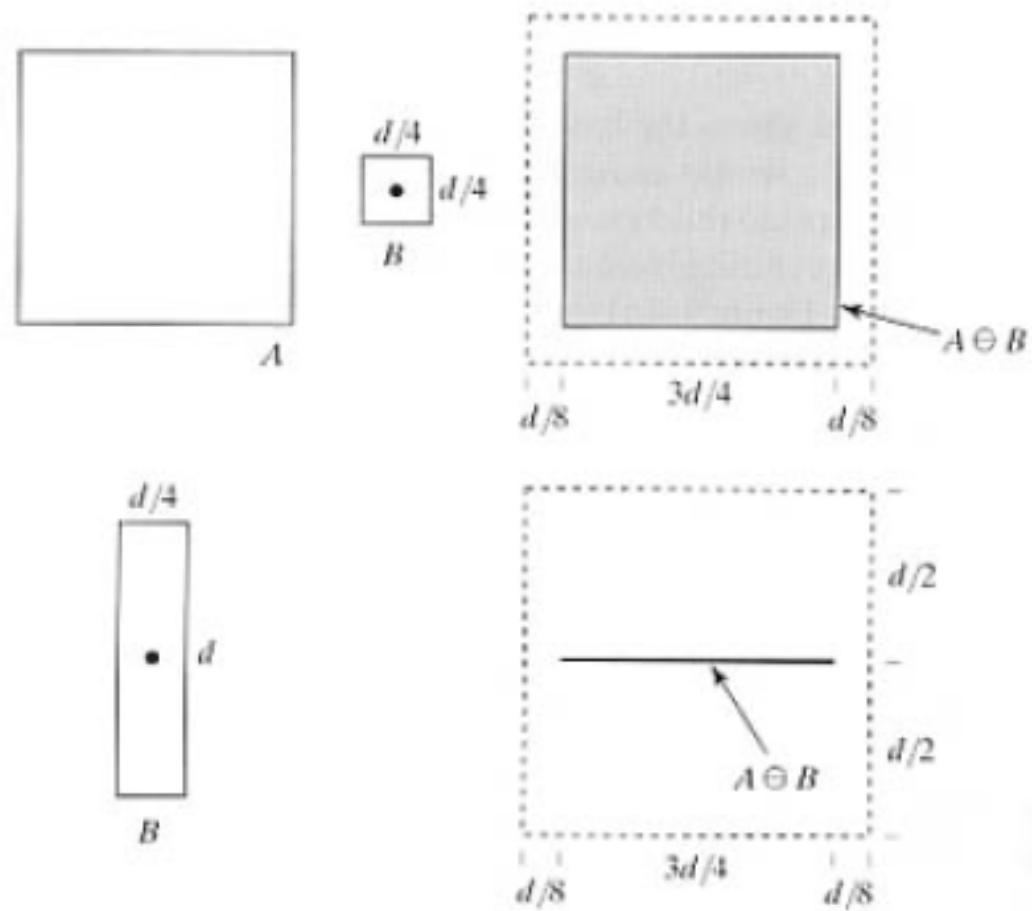
Dilation



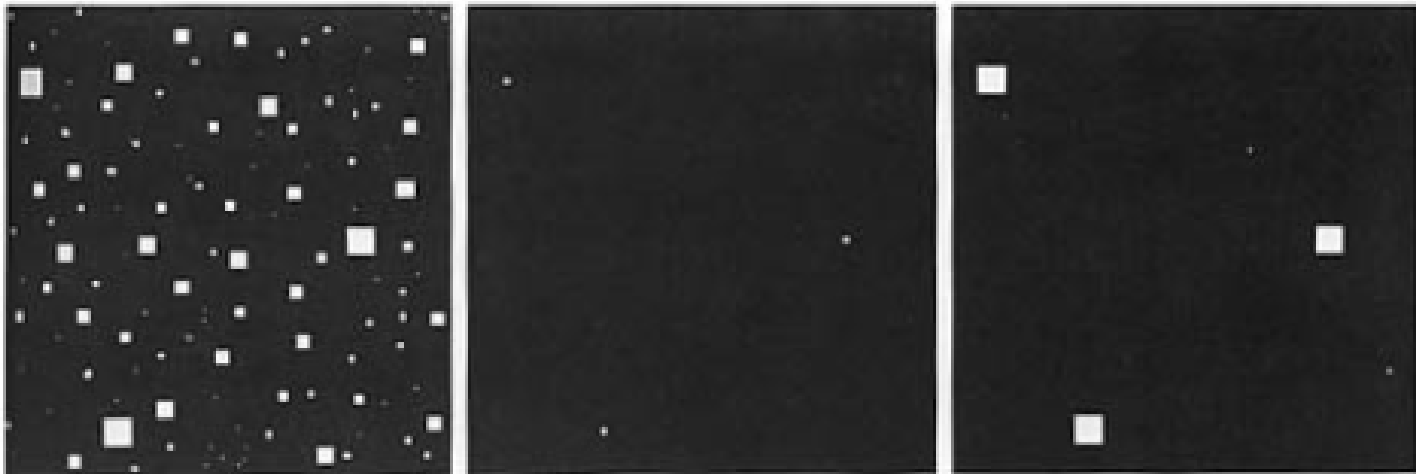
Dilation: Join Broken Segments



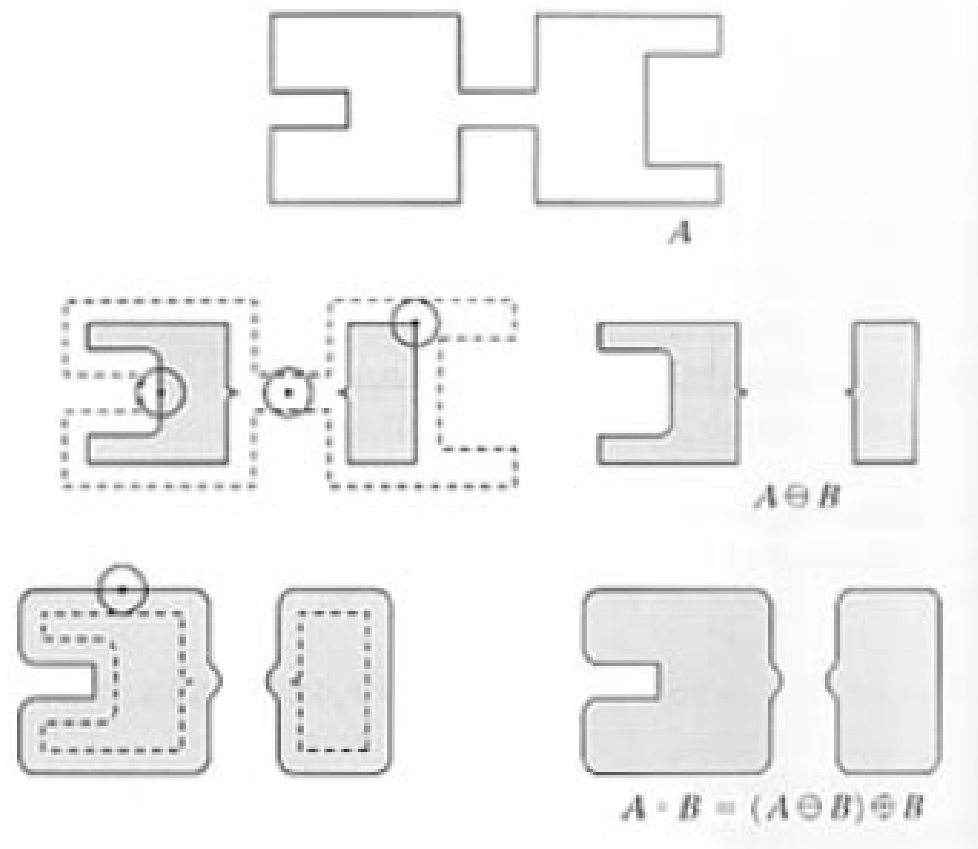
Erosion



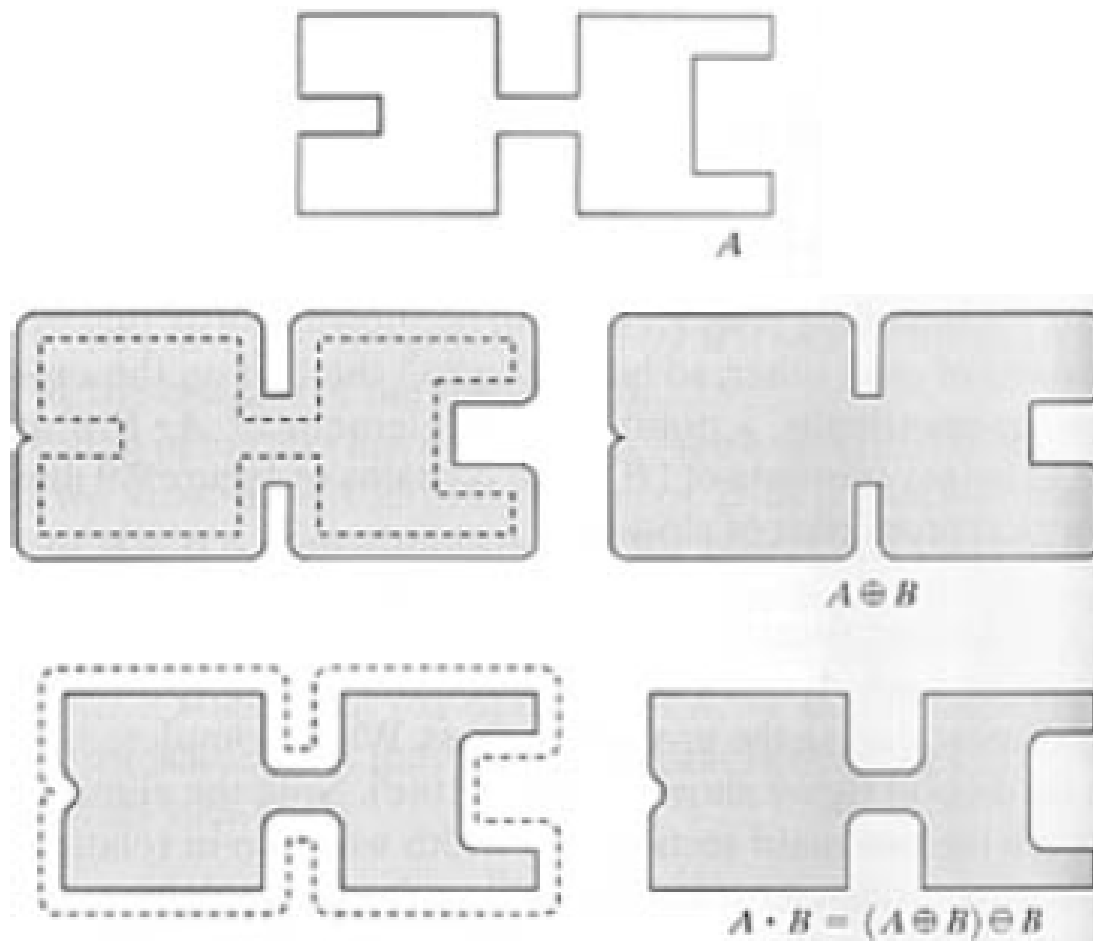
Erosion and Dilation: Eliminating Irrelevant Details



Opening



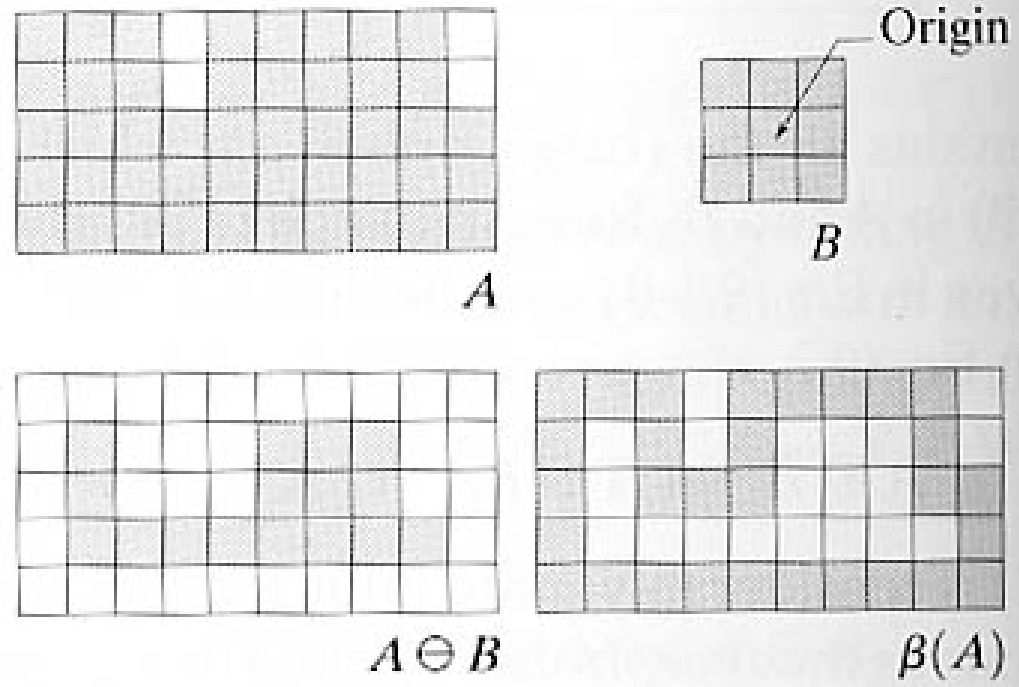
Closing



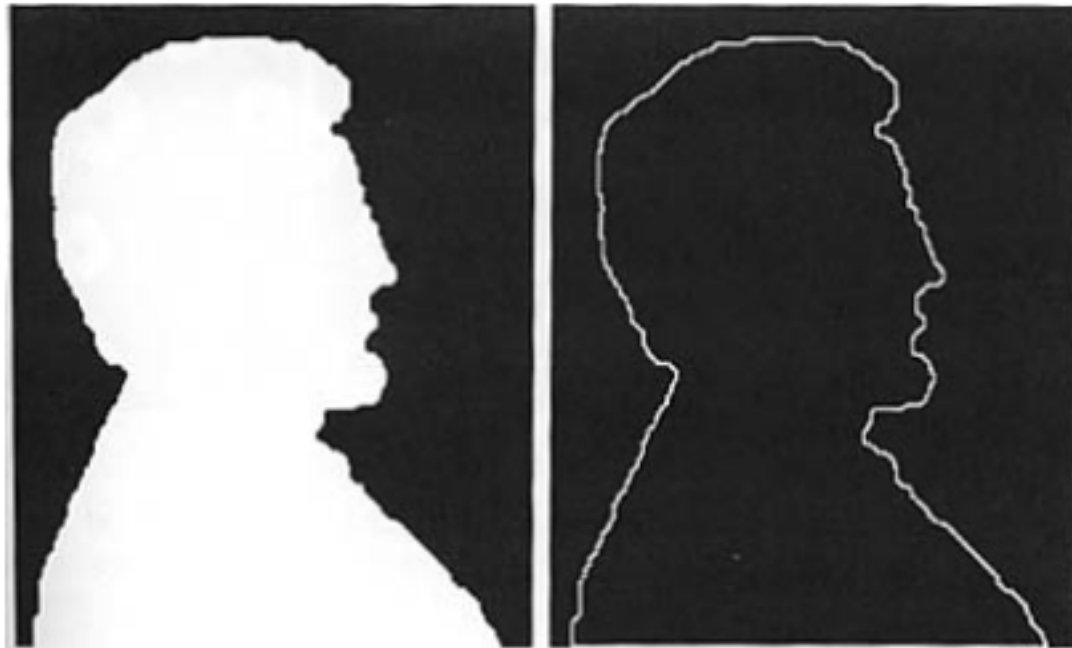
Opening and Closing: Noise Filter



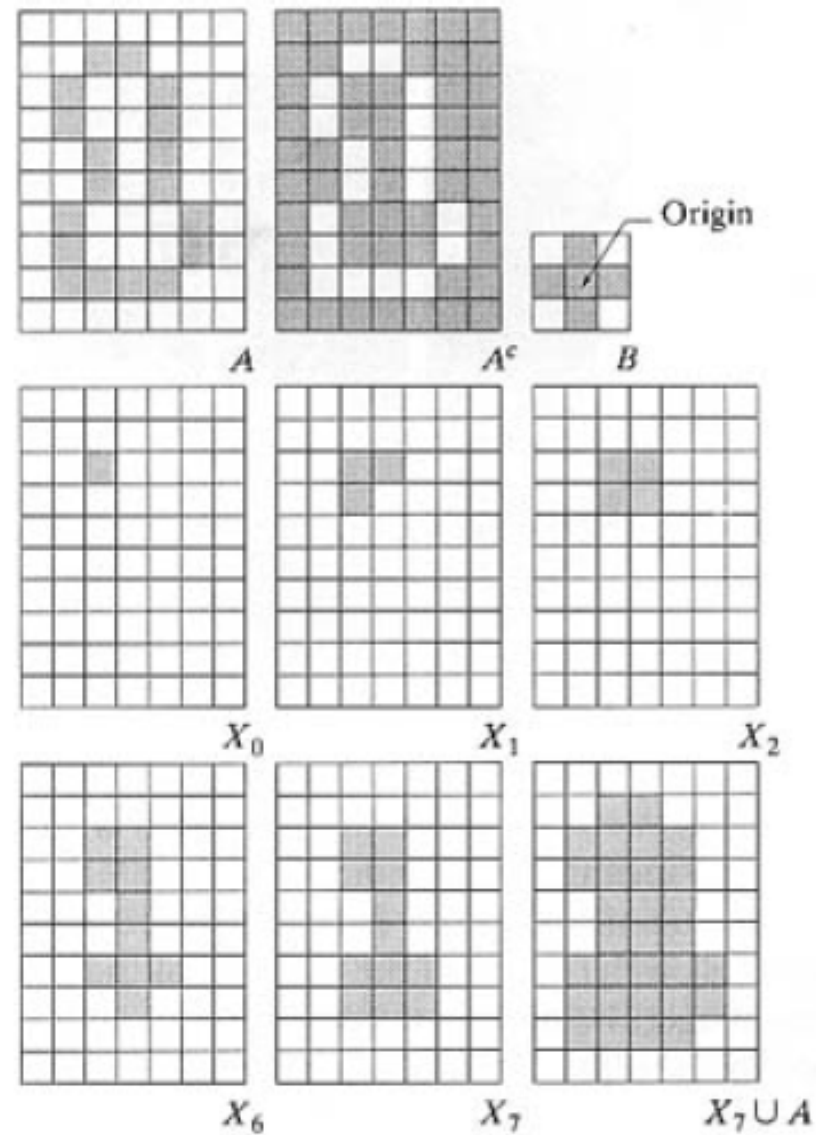
Boundary Extraction



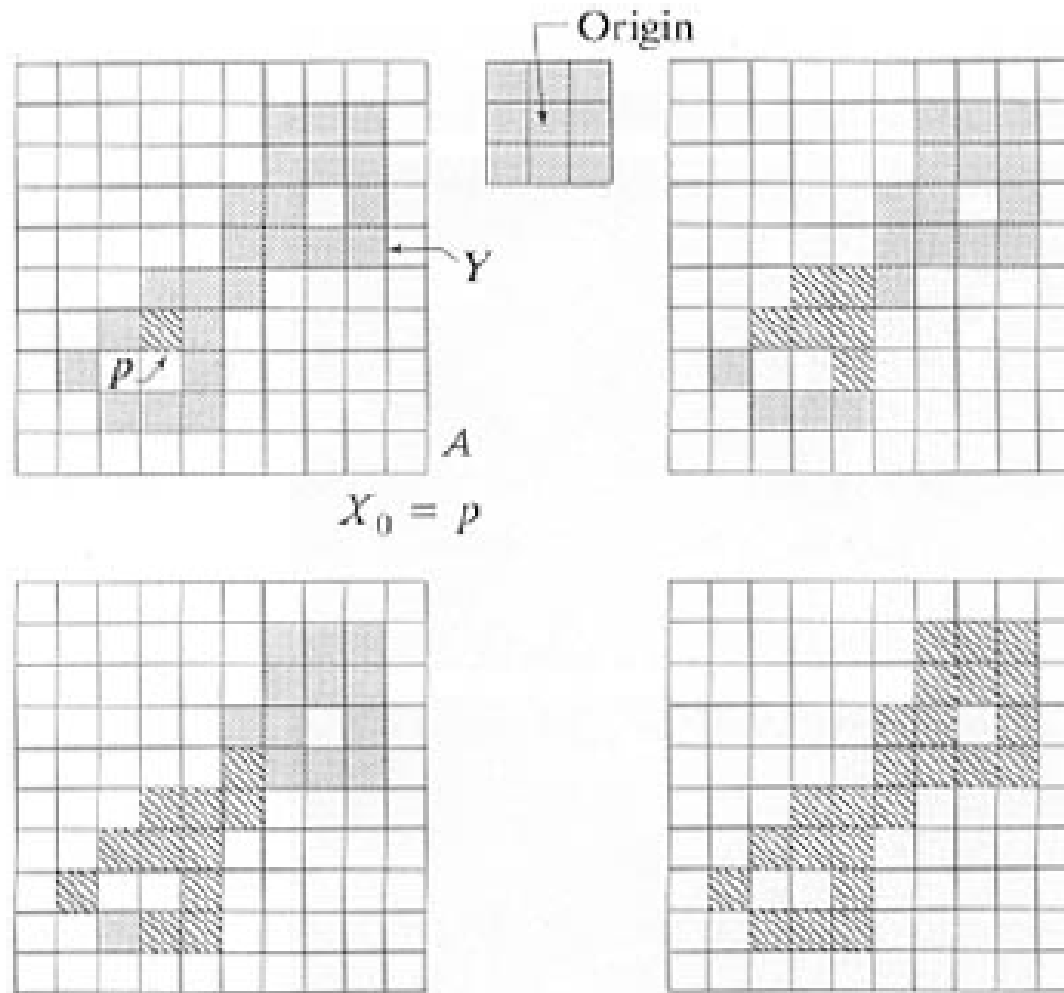
Region Filling



Region Filling



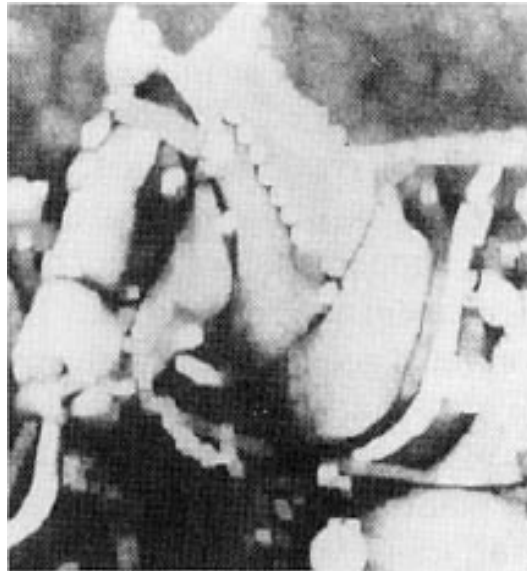
Connected Components



Gray Scale: Dilation and Erosion



Original



Dilation: Brighter where small dark details are reduced



Erosion: Darker where small bright details are reduced

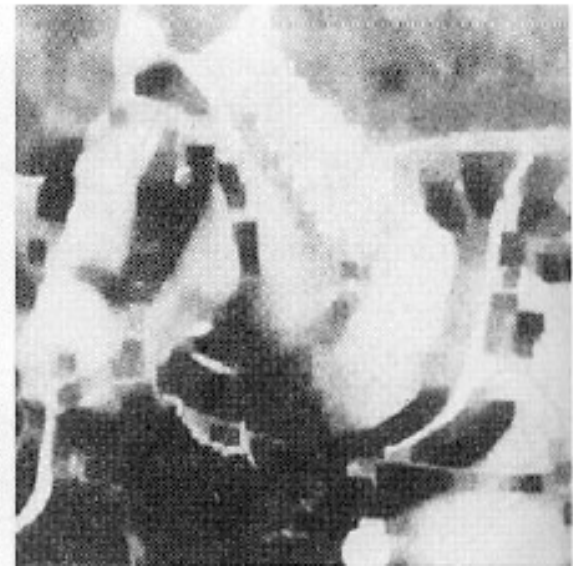
Gray Scale: Opening and Closing



Original

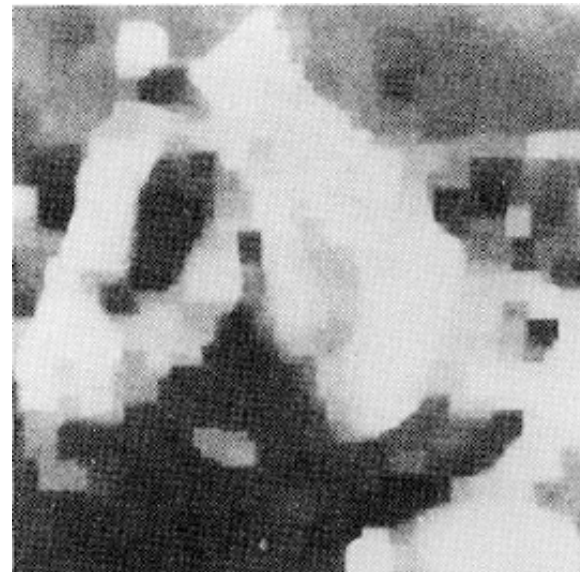


Opening: Reduces small bright details with little effect on dark areas.

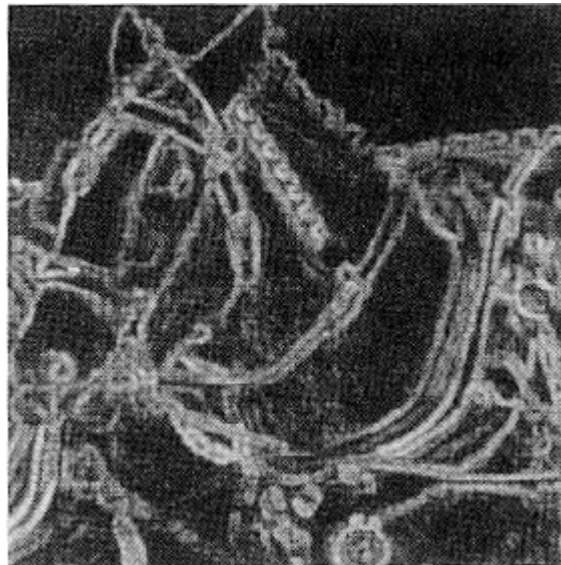
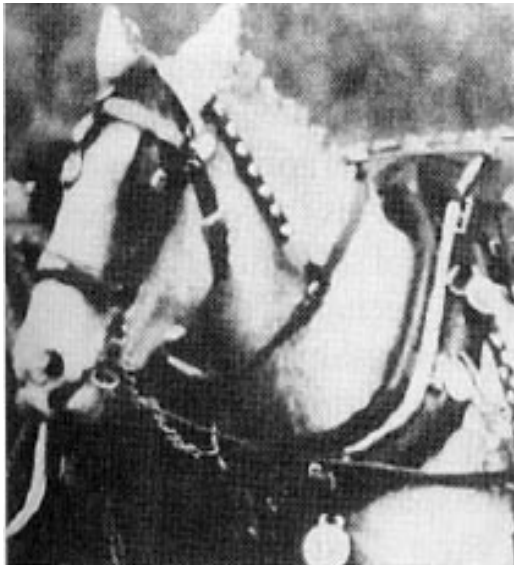


Closing: Reduces small dark details with little effect on bright areas

Smoothing: Opening and then Closing



Gradient: Dilation - Erosion



- Morphological Edge Detector
- Direction Independent