

INF 111 / CSE 121

Discussion Session
Week 8 - Fall 2007

Instructor: Michele Rousseau
TA: Rosalva Gallardo

Agenda

- Assignment 2
 - New deadline has been updated in Checkmate. No resubmission needed if you already sent it.
 - Questions
- UML Diagrams using Argo UML
 - Adding Interfaces to the Class Diagram
 - Adding Packages to the Class Diagram
 - Sequence Diagrams
- Create a baseline version using CVS

Assignment 2

- Questions:
 - What is the difference between composition and aggregation? Do we need to include them in our class diagram?
 - How many use cases we need to include? How many use cases in extended format we need to include?
 - Do we need to include operations in the class diagram?
 - Which file format should we use to store our time log entries?
 - Which screen shots do we need to include for parts 1 and 2?

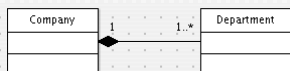
Class Diagram

- Aggregation
 - An association with an aggregation relationship indicates that one class is a part of another class. In an aggregation relationship, the child class instance can outlive its parent class.



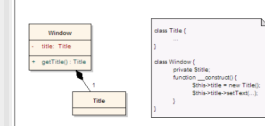
Class Diagram

- Composition
 - The composition relationship is just another form of the aggregation relationship, but the child class's instance lifecycle is dependent on the parent class's instance lifecycle.

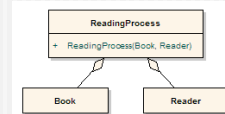


More examples...

Composition



Aggregation



Both together

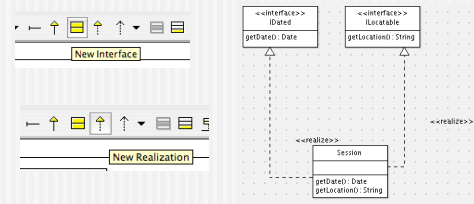


Taken from: <http://www.alexmet.com/node/15>

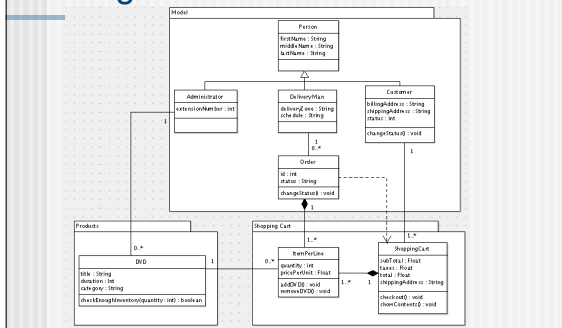
Assignment 2

- Questions:
 - What is the difference between composition and aggregation? Do we need to include them in our class diagram?
 - How many use cases we need to include? How many use cases in extended format we need to include?
 - Do we need to include operations in the class diagram?
 - Which file format should we use to store our time log entries?
 - Which screen shots do we need to include for parts 1 and 2?

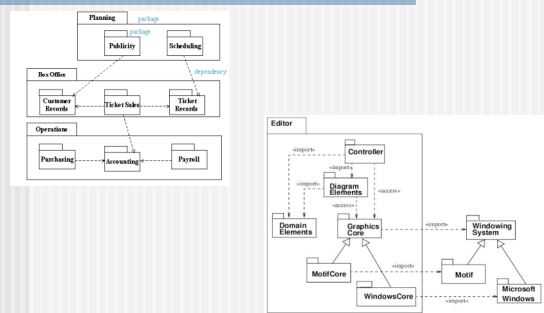
Adding Interfaces to the Class Diagram



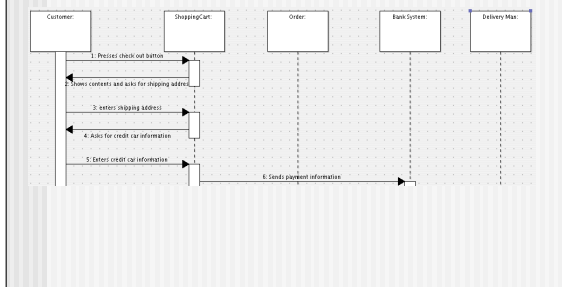
Adding Packages to the Class Diagram



Also Possible to Represent only Packages

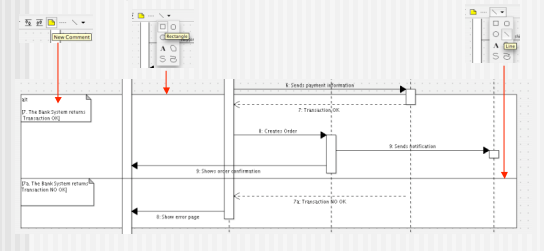


Sequence Diagrams

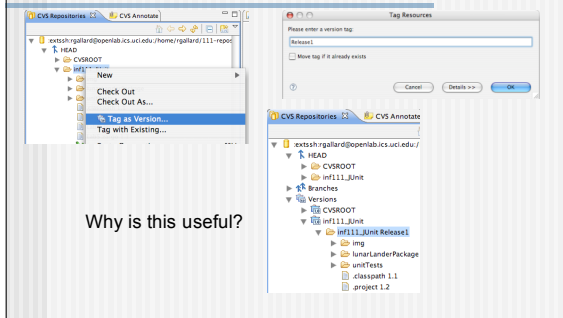


Sequence Diagrams

- ArgoUML does not support frames. We should use rectangles, lines, and comments to represent them.



Create a baseline version using CVS



The screenshot displays the CVS software interface. On the left, a file tree shows the repository structure, with the 'Tag as Version...' option highlighted in the context menu. On the right, the 'Tag Resources' dialog box is open, prompting the user to enter a version tag. Below the dialog, the file tree is expanded to show the 'inf111_Junit' directory, which contains subdirectories like 'img', 'lunarLanderPackage', 'unitTests', 'classpath 1.1', and 'project 1.2'.

Why is this useful?