

# **APPENDIX A**

## **Topic 4 Mockups/Scenarios**

### **Screens for the “Table Width” Example**

---

## Interface Before Action 1

The table that the user has created is visible, with the menu bar above it.

SPECIES	NUMBER TESTED	NUMBER POSITIVE	PERCENTAGE POSITIVE
Camel	9	7	78
Cow	36	6	17
Donkey	15	7	47
Gamoose (water buffalo)	188	135	72
Goat	49	1	2
Horse	14	12	86
Sheep	64	15	23
Rat	43	0	-
Bat	48	4	8

## Interface Before Action 2

Action 1 has been correctly taken, and the column is highlighted.

This is a menu-based system, and we can expect the user to look through some of the menus, especially those with titles that might be relevant to the goal. The next few pages show what the user would find on some of the menus that are available.

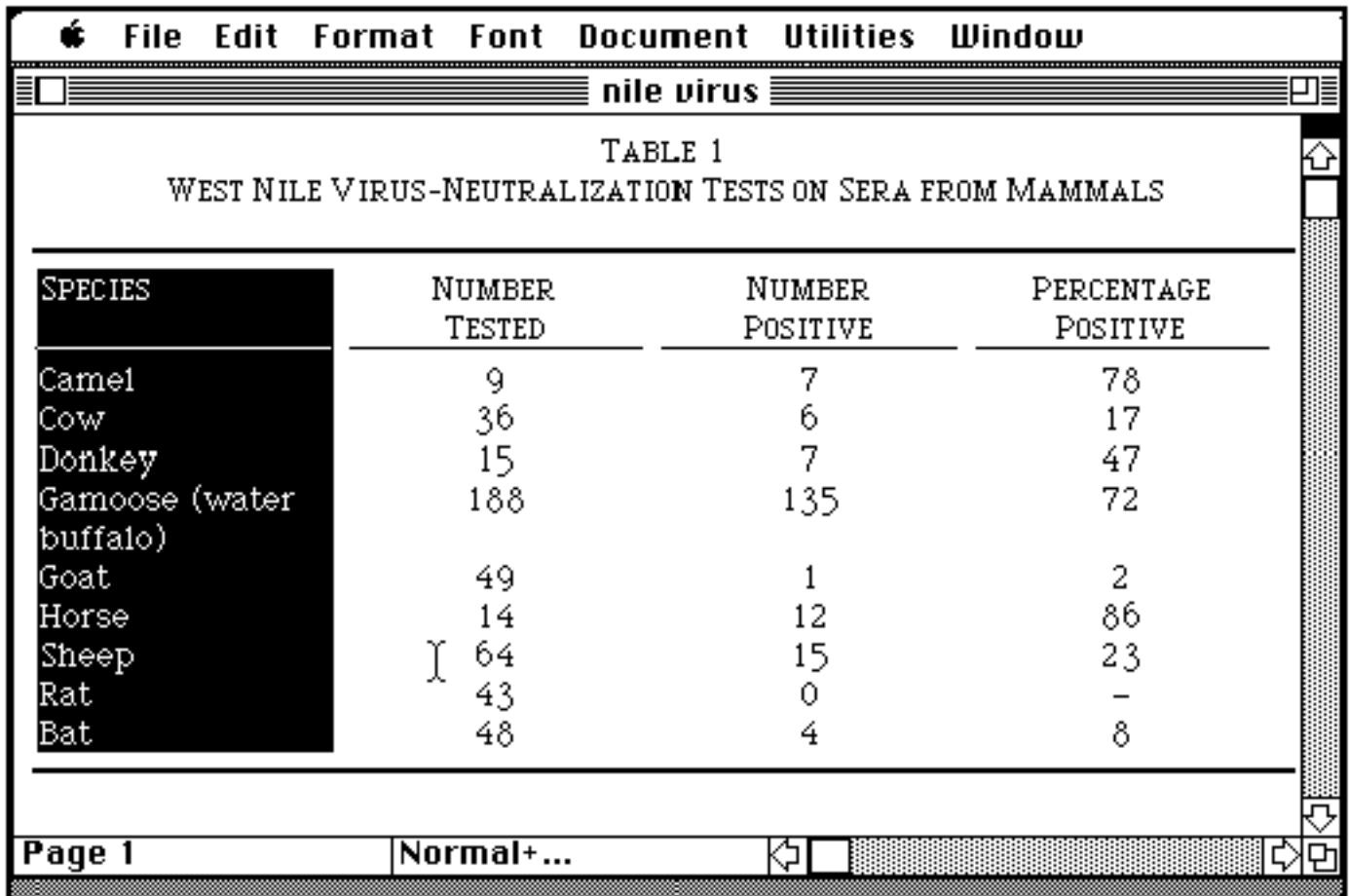
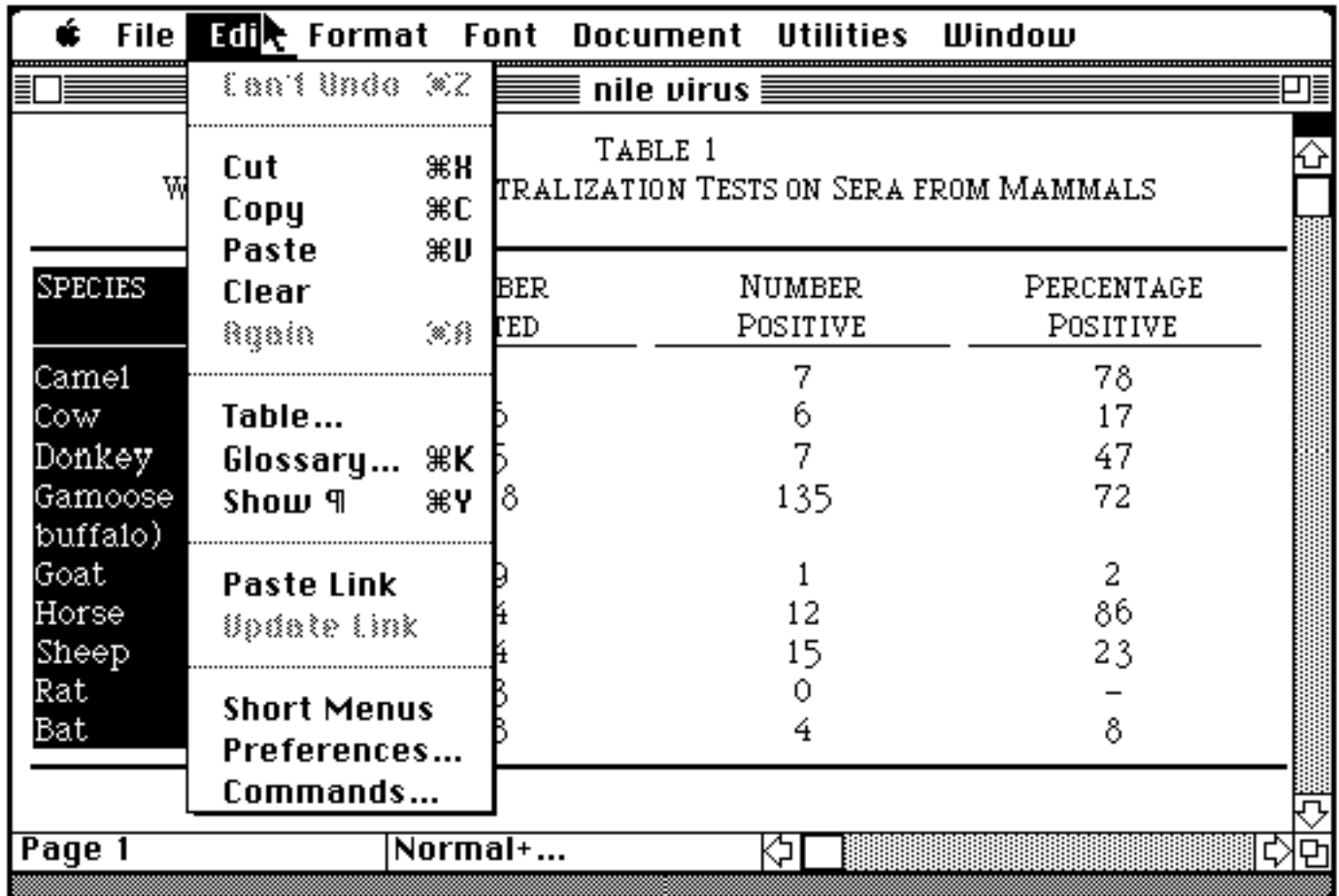


TABLE 1  
WEST NILE VIRUS-NEUTRALIZATION TESTS ON SERA FROM MAMMALS

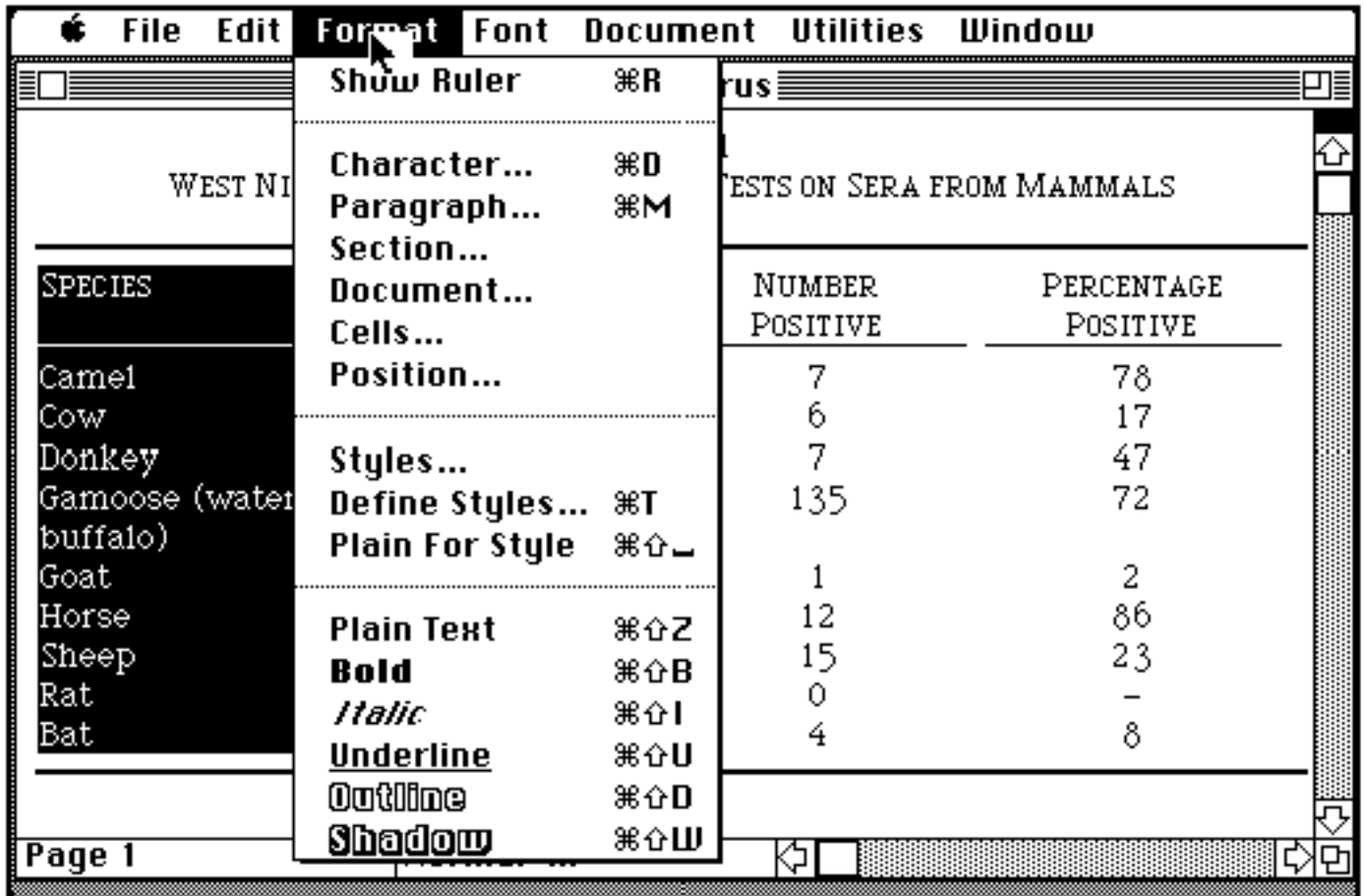
SPECIES	NUMBER TESTED	NUMBER POSITIVE	PERCENTAGE POSITIVE
Camel	9	7	78
Cow	36	6	17
Donkey	15	7	47
Gamoose (water buffalo)	188	135	72
Goat	49	1	2
Horse	14	12	86
Sheep	64	15	23
Rat	43	0	-
Bat	48	4	8

Page 1      Normal+...

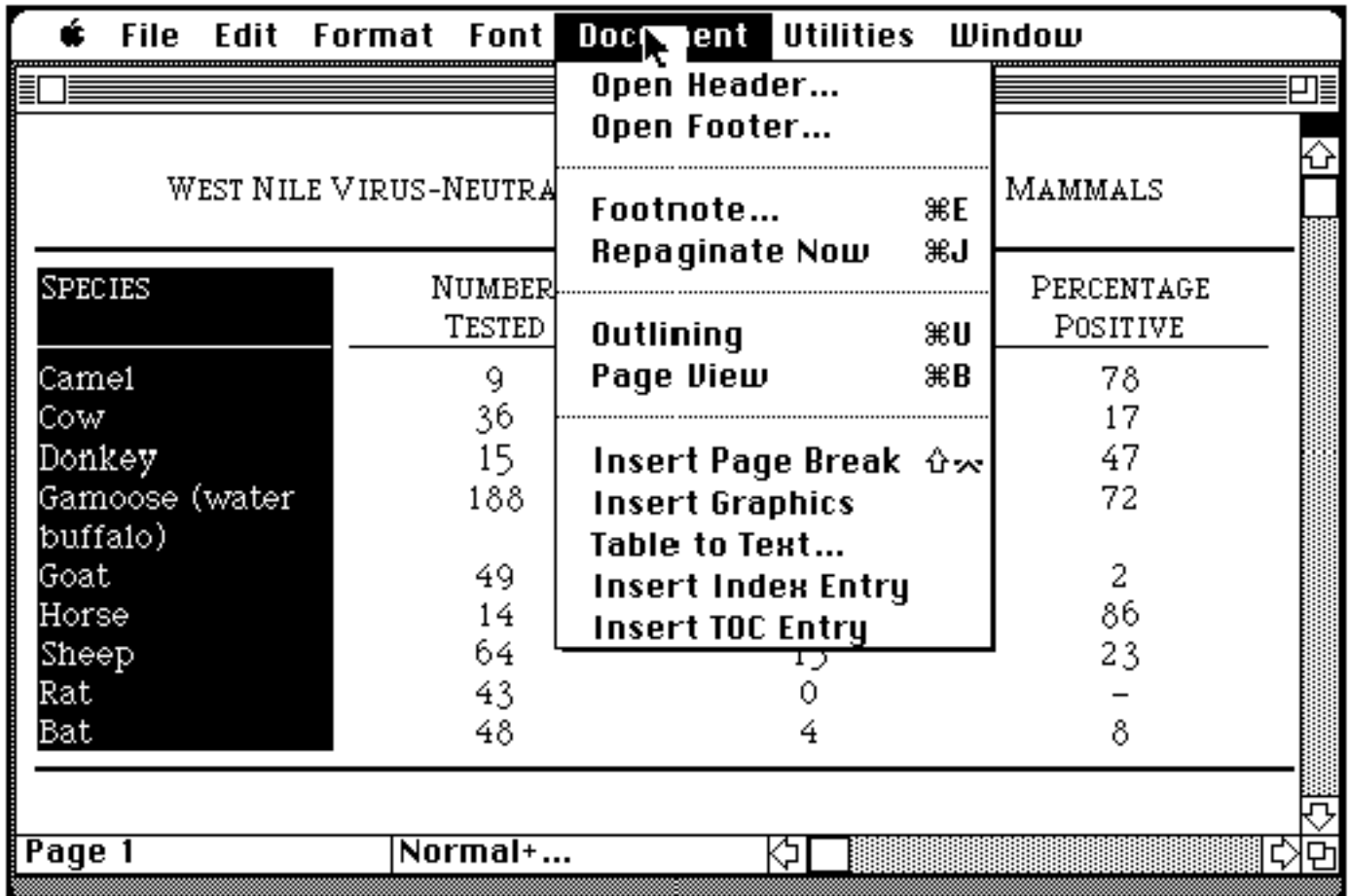
Interface Before Action 2, continued (some menu options)



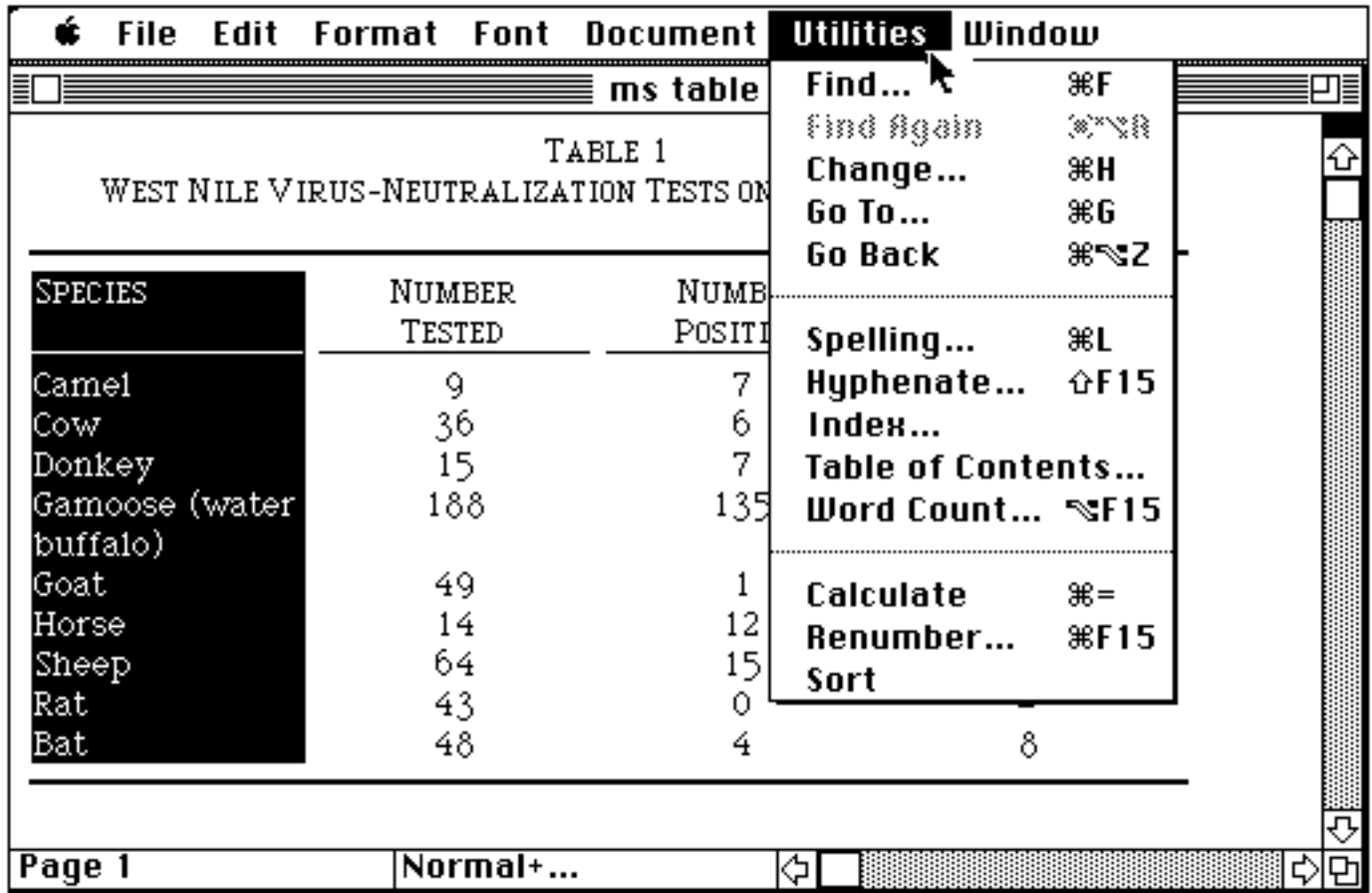
Interface Before Action 2, continued (more menu options)



Interface Before Action 2, continued (more menu options)

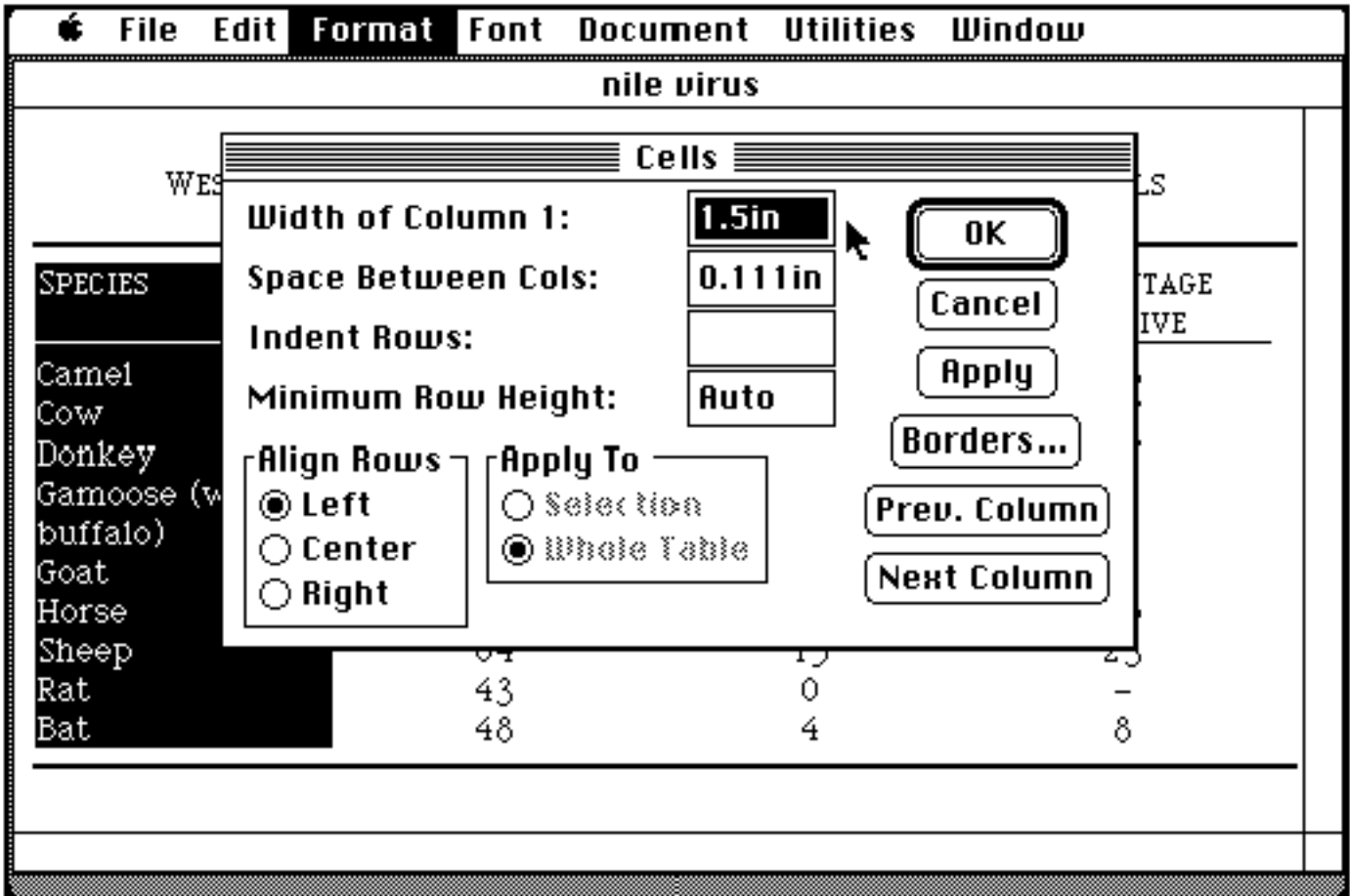


Interface Before Action 2, continued (more menu options)



### Interface Before Action 3

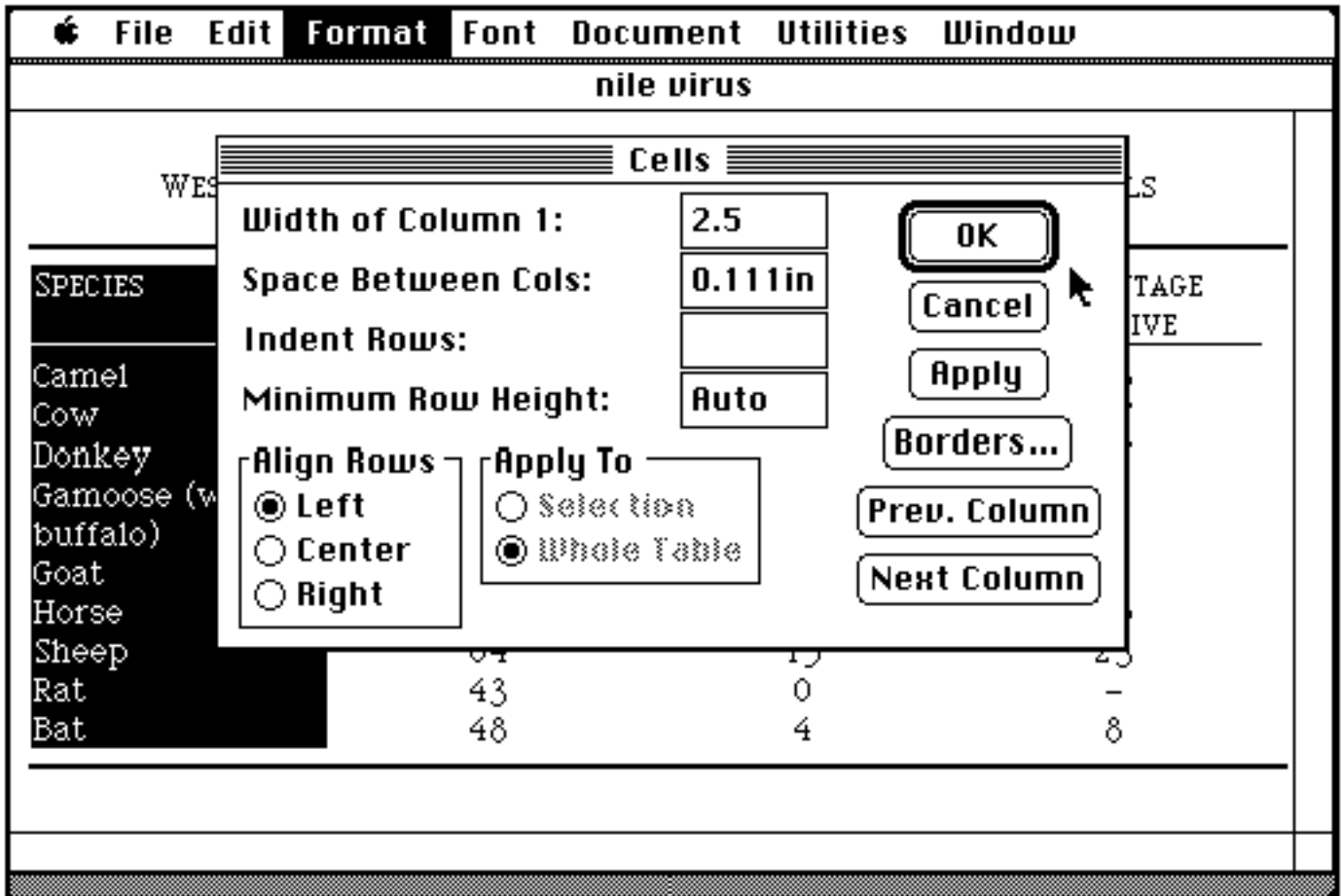
The user has correctly performed action 2 and a dialog box is visible. The field showing the Width of Column 1 is highlighted.





### Interface Before Action 4

The user has correctly performed action 3, so the Column Width field now shows "2.5"



## Interface After Action 4

The task is now complete. There are no more actions, but you'll need to check for appropriate feedback from the previous action.

TABLE 1  
WEST NILE VIRUS-NEUTRALIZATION TESTS ON SERA FROM MAMMALS

SPECIES	NUMBER TESTED	NUMBER POSITIVE	PERCENTAGE POSITIVE
Camel	9	7	78
Cow	36	6	17
Donkey	15	7	47
Gamoose (water buffalo)	188	135	72
Goat	49	1	2
Horse	14	12	86
Sheep	64	15	23
Rat	43	0	-
Bat	48	4	8

Page 1      Normal+...